

The information contained within this announcement is deemed by the Company to constitute inside information as stipulated under the Market Abuse Regulation (EU) No. 596/2014 ("MAR")



16 November 2020

Wishbone Gold Plc
("Wishbone" or the "Company")

Wishbone Gold Plc / Index: AIM: WSBN / Sector: Natural Resources / AQSE: WSBN

Clarification re:

Completion of acquisition - announced 12 November 2020

Wishbone Gold Plc (AIM: WSBN, AQSE: WSBN) the London listed precious metals trading and exploration company has been made aware that there may have been some confusion by the announcement referred to above and by subsequent media references as regards the references to the "Patersons Range Havieron/Telfer Project" in the above mentioned announcement and/or "Havieron/Telfer".

The Company wishes to point investors to the original announcement, as referenced in the above mentioned announcement, of 5 October 2020, wherein it was clearly explained that the Company's new projects were in the region of the Paterson Ranges which host the separate Havieron and Telfer projects as such:

The Patersons Range Project has three approved exploration licenses: 45/5297, 45/5408, and 45/5409.

· EL 45/5297 is a large is 57.4 km² tenement and is located only 13 km south-west of the Telfer Gold Mine, which is operated by Newcrest Mining (see attached map as previously shown in the RNS dated 5 October 2020).

· EL's 45/5408 and 45/5409 (6.376 km² and 3.188 km² respectively) are located about 15 km south-east of Telfer and only about 25 km south-west of the new Havieron gold discovery operated by Greatland Gold Plc and Newcrest Mining. (see attached map as previously shown in the RNS dated 5 October 2020).

However, to avoid any potential future confusion, the Company will henceforth refer to the main EL45/5297 project as the "Red Setter Project".

For further information, please contact:

Wishbone Gold PLC
Richard Poulden, Chairman

Tel: +971 45 846 284

Beaumont Cornish Limited

(Nominated Adviser and AQUIS Exchange
Corporate Adviser)
Roland Cornish/Rosalind Hill Abrahams

Tel: +44 20 7628 3396

Peterhouse Capital Limited
(Broker)
Lucy Williams and Duncan Vasey

Tel: +44 20 7469 0930

RED SETTER PROJECT LOCATION MAP

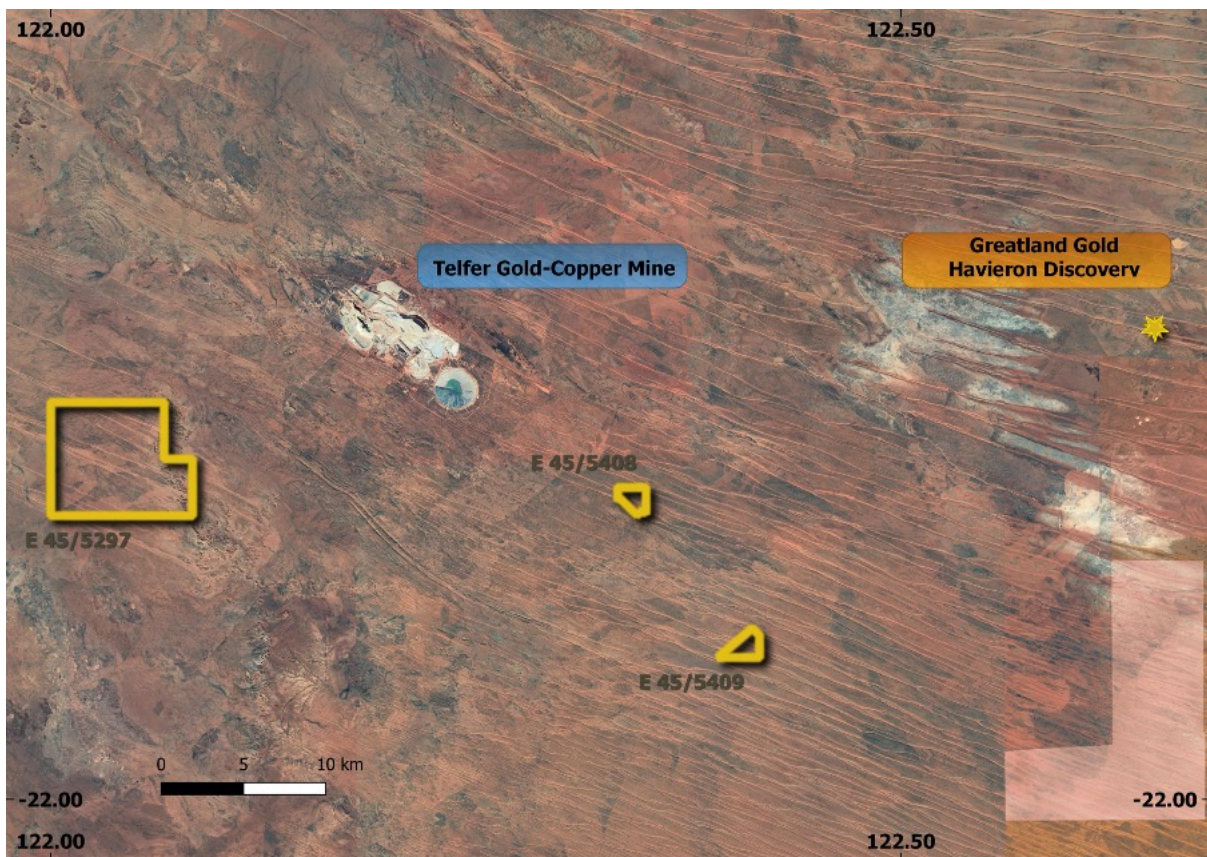


Figure 1: Red Setter Project Location Plan

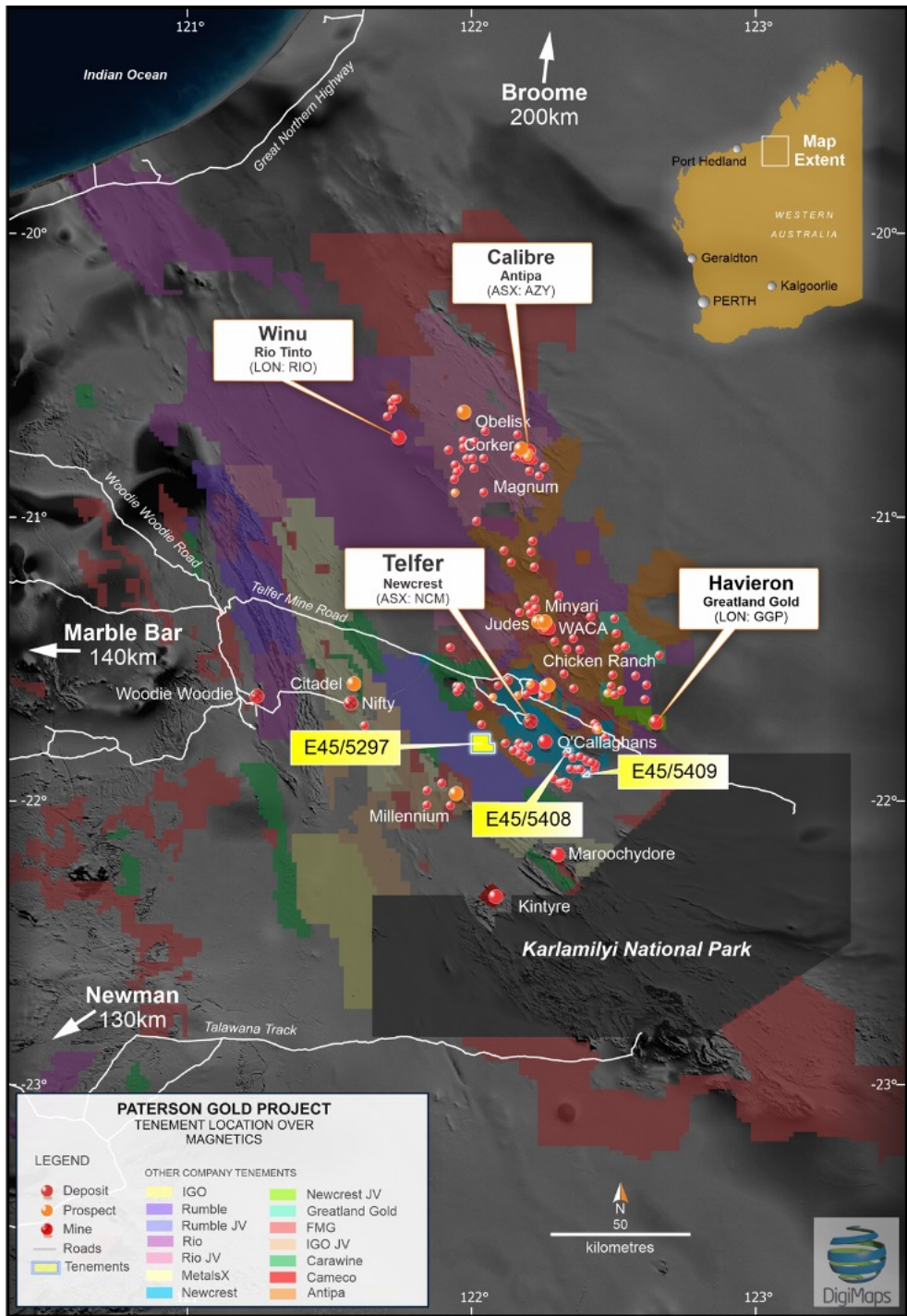


Figure 2: Red Setter Project Regional Location Map