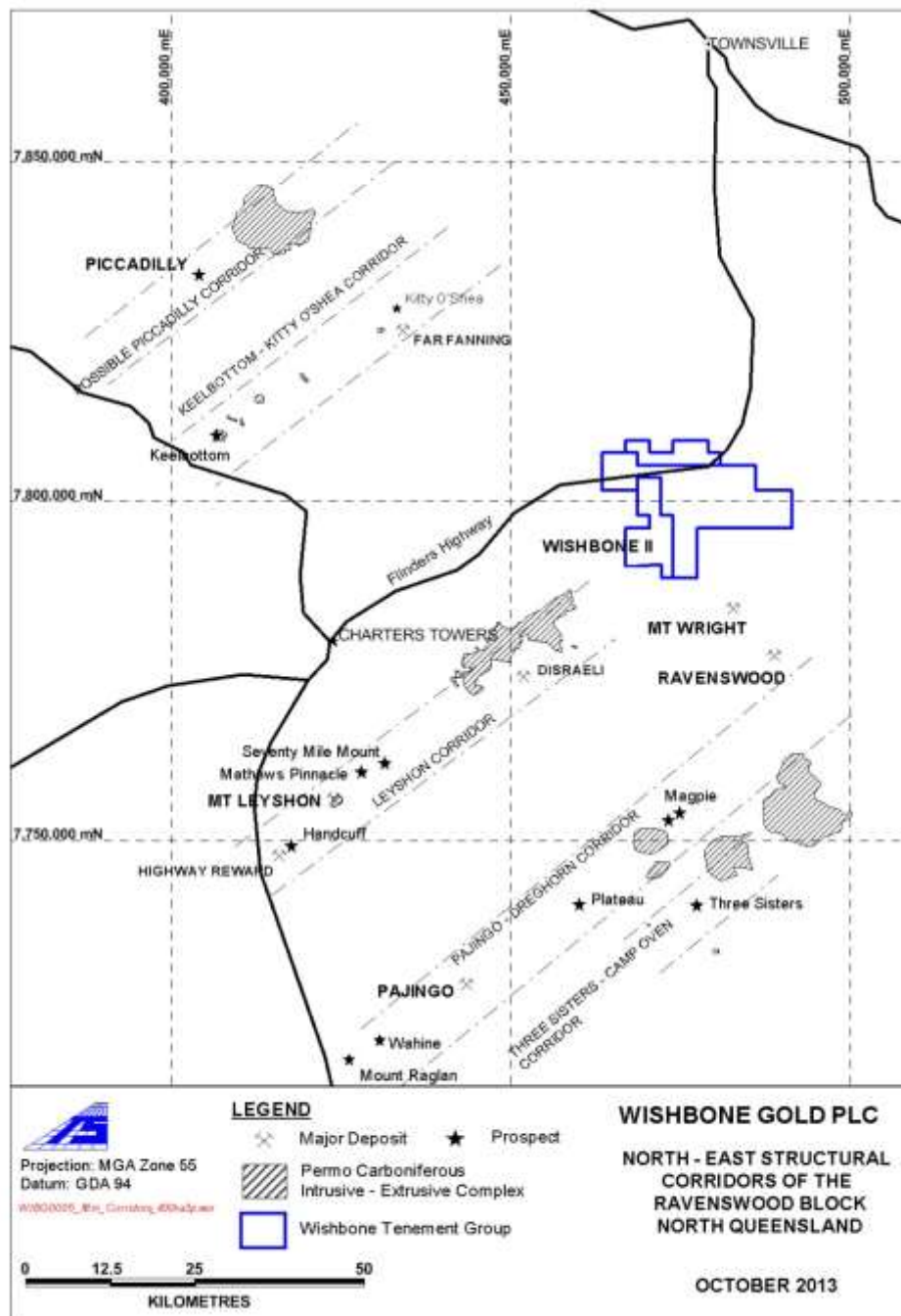


**Terra Search Pty Ltd**

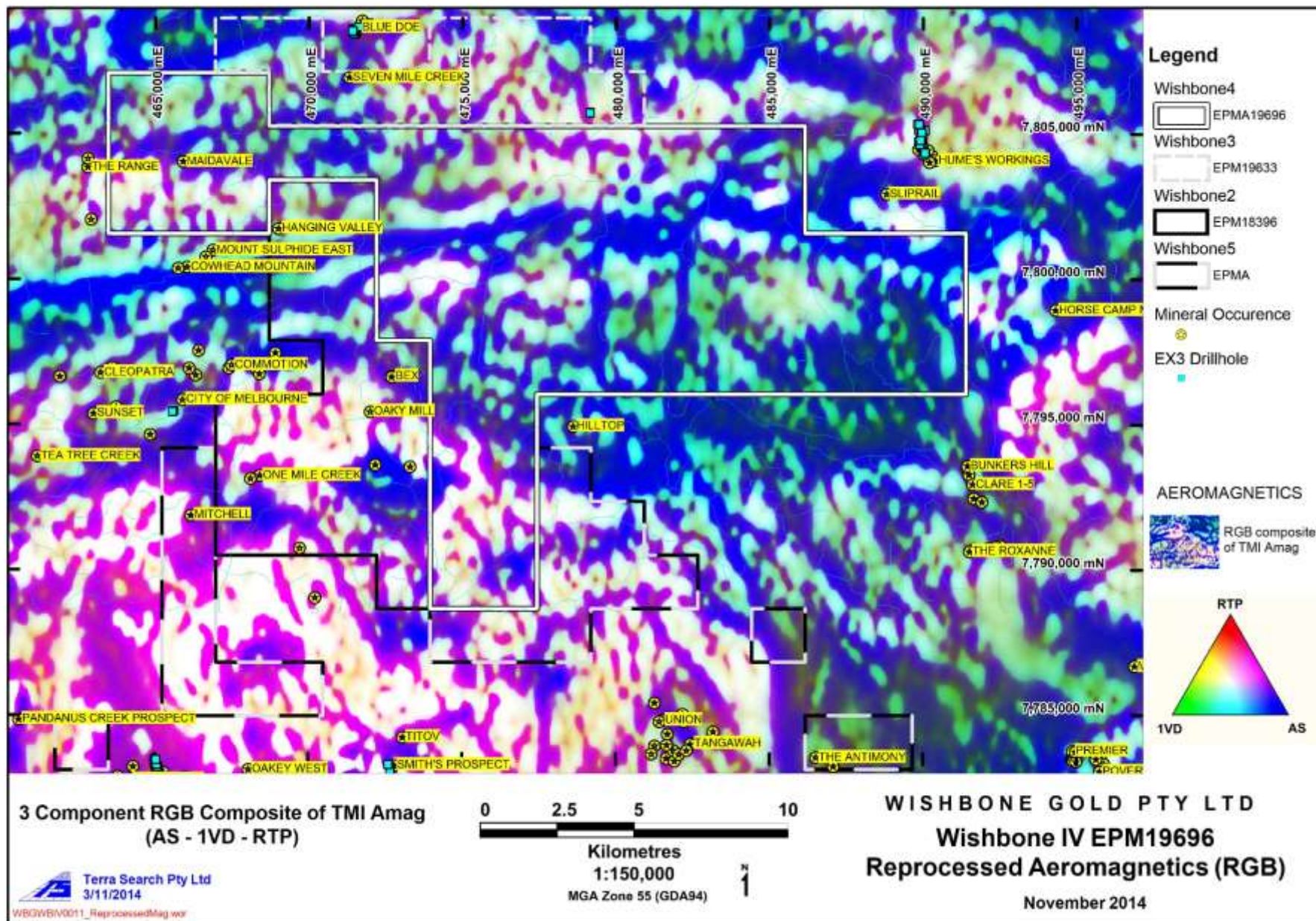
Specialists in Mineral Exploration, Geology and Computing

**WISHBONE GOLD  
RESULTS OF RECENT EXPLORATION  
AND FUTURE POTENTIAL WISHBONE  
AND WHITE MOUNTAINS PROJECTS  
MAY, 2015  
ALL PROPERTIES 100% OWNED BY  
WISHBONE GOLD PLC**











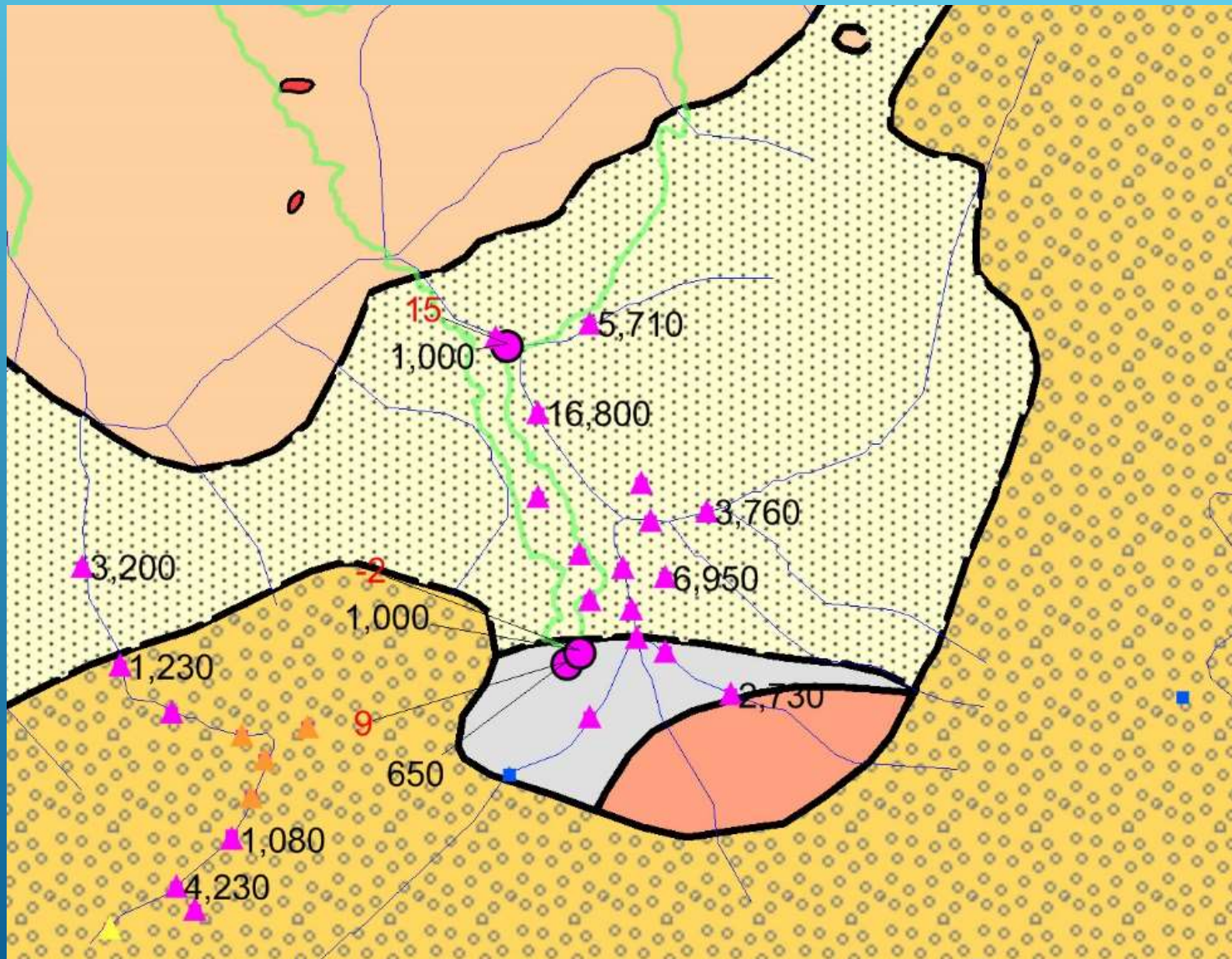
# Hanging Valley





# VISIBLE GOLD IN PANNED CONCENTRATES

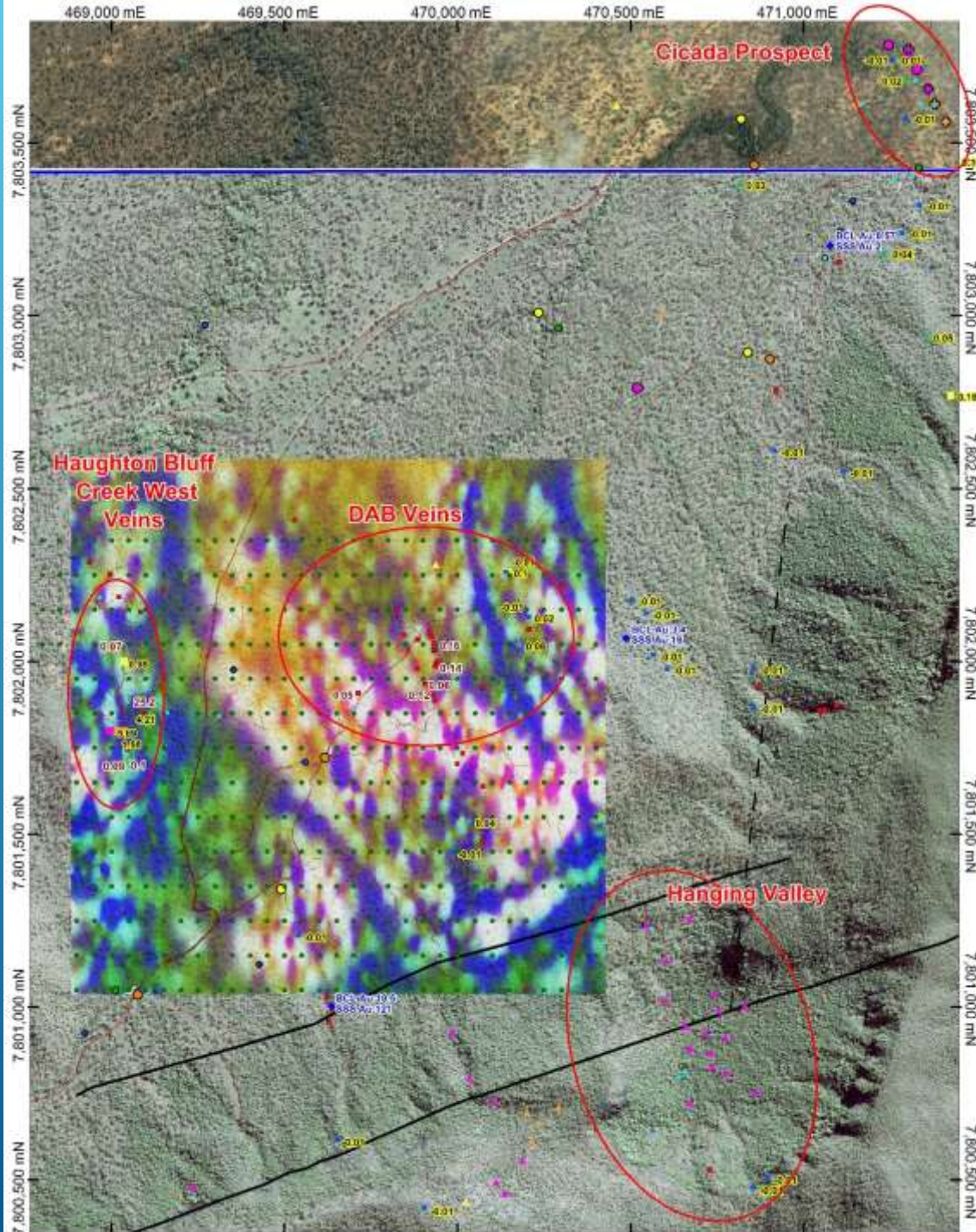
## AU IN PPB











# Wishbone Gold Pty Ltd

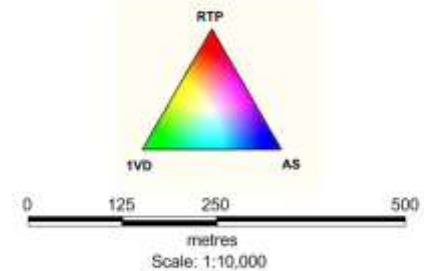
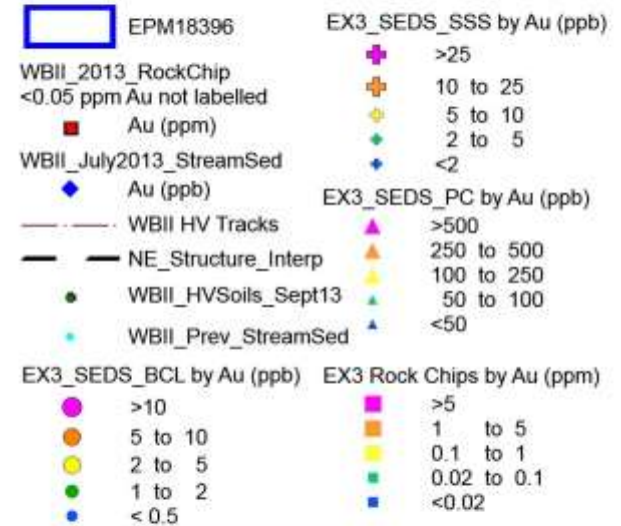
## Wishbone II

### EPM19396

Hanging Valley Field Recon  
September 2013 Soil Grid &  
Ground Magnetics  
3 Component RGB  
(1VD RTP AS) UC10

Background: Geoimage Satellite Imagery

#### Legend



Projection: MGA Zone 55 (GDA94)

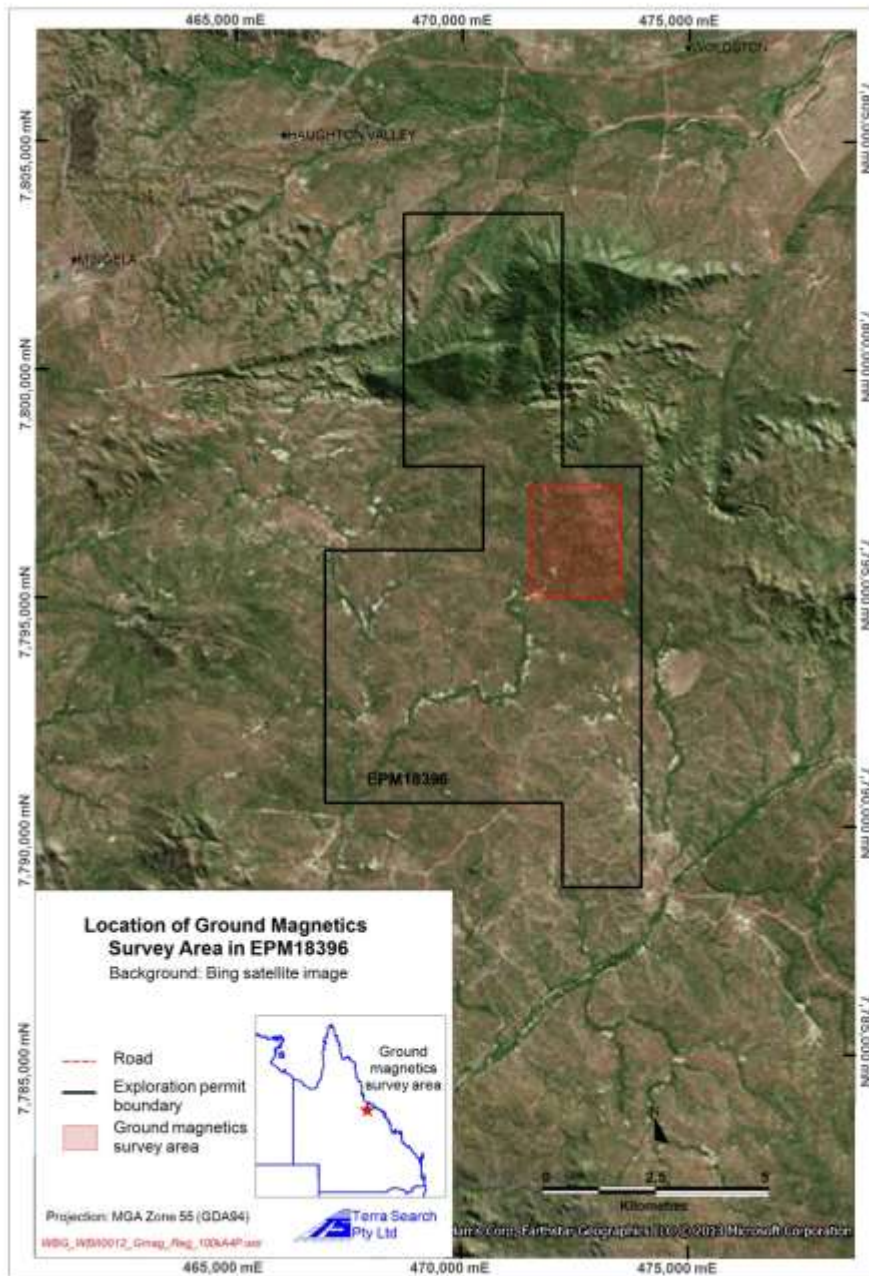


## Oaky Mill

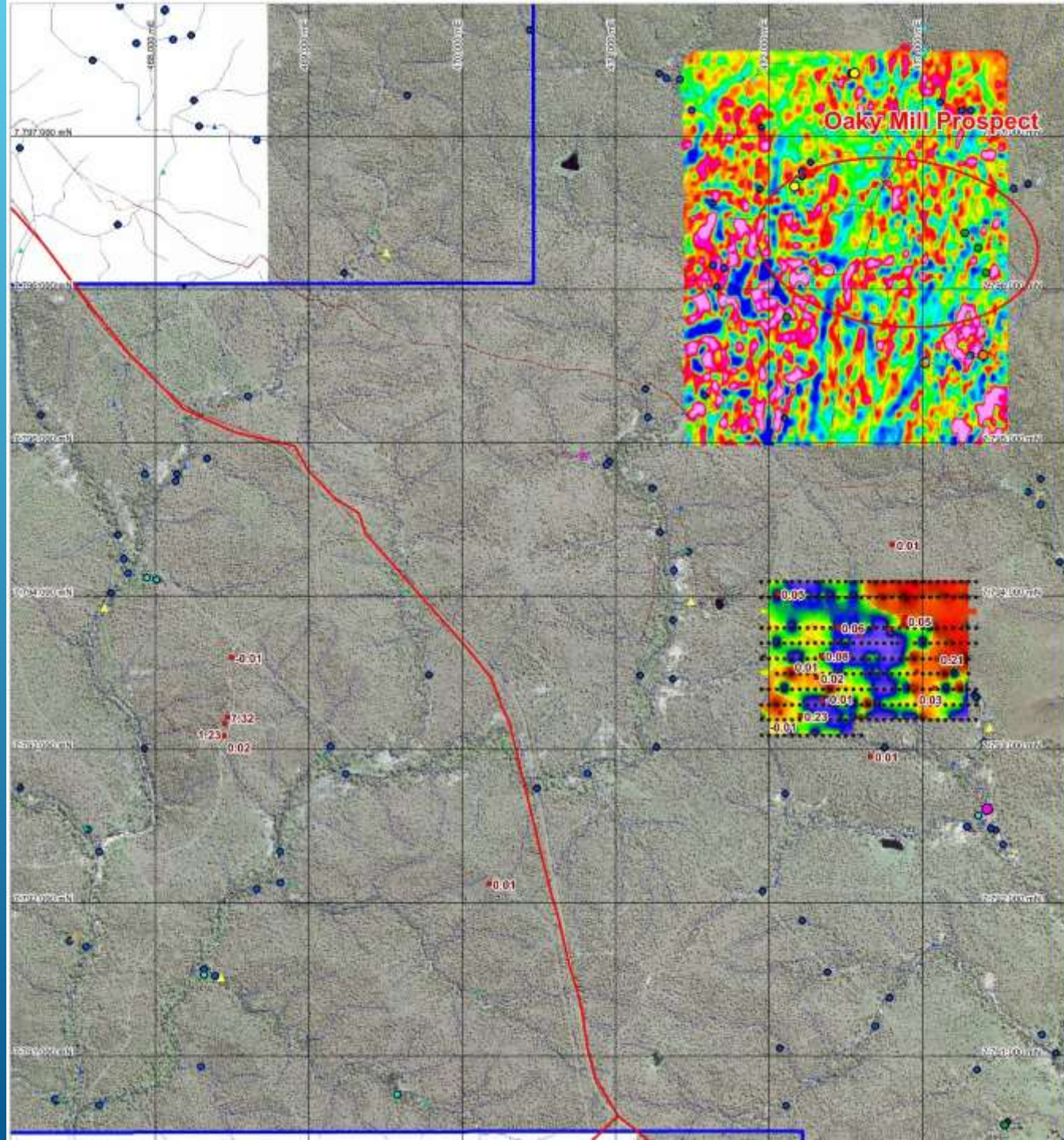
Granite Hosted Quartz sulphide vein returning some high grade gold values.

## Halo Prospect

Copper bearing greisenized granite



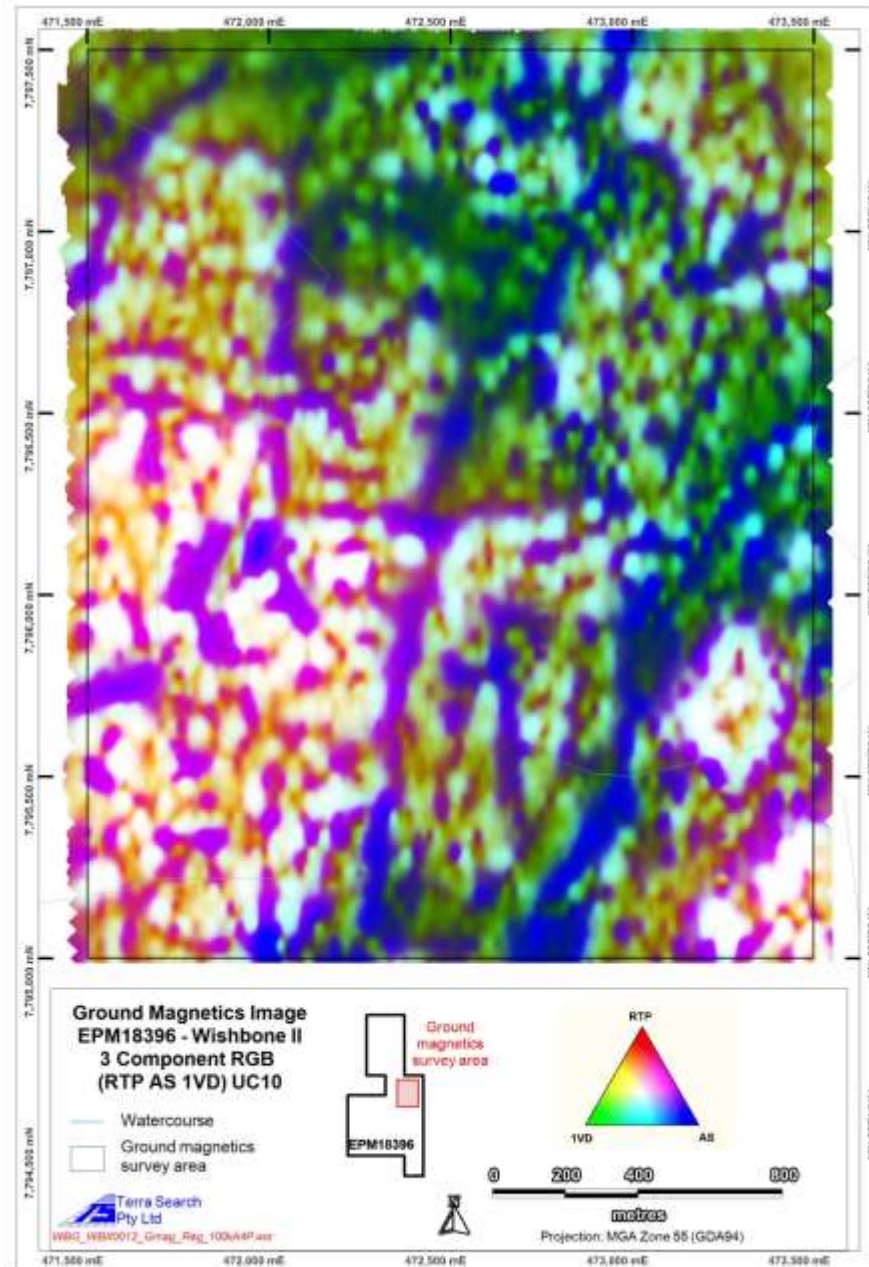




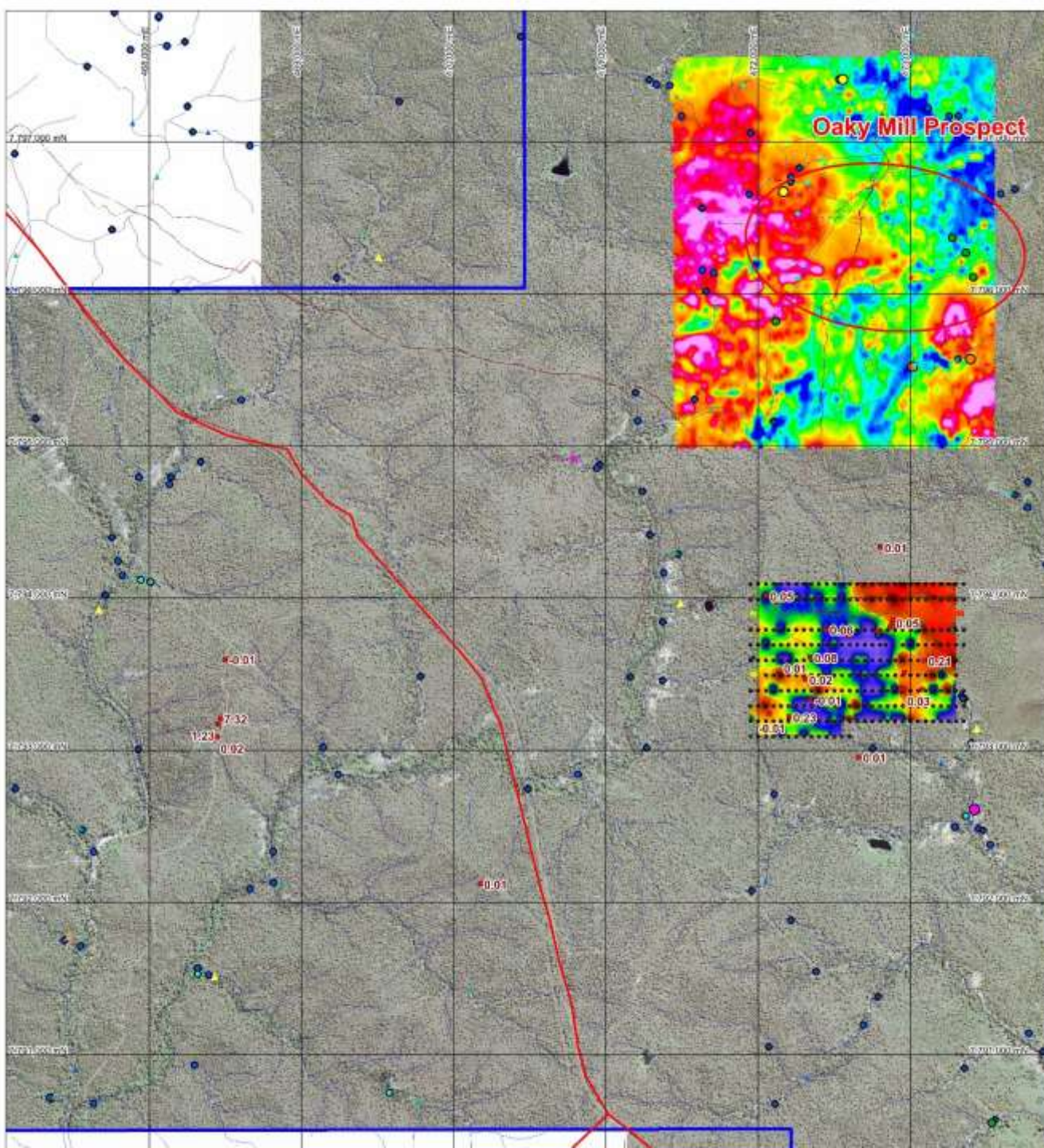
Gmag\_AS\_RTP\_UC10



# Oaky Mill





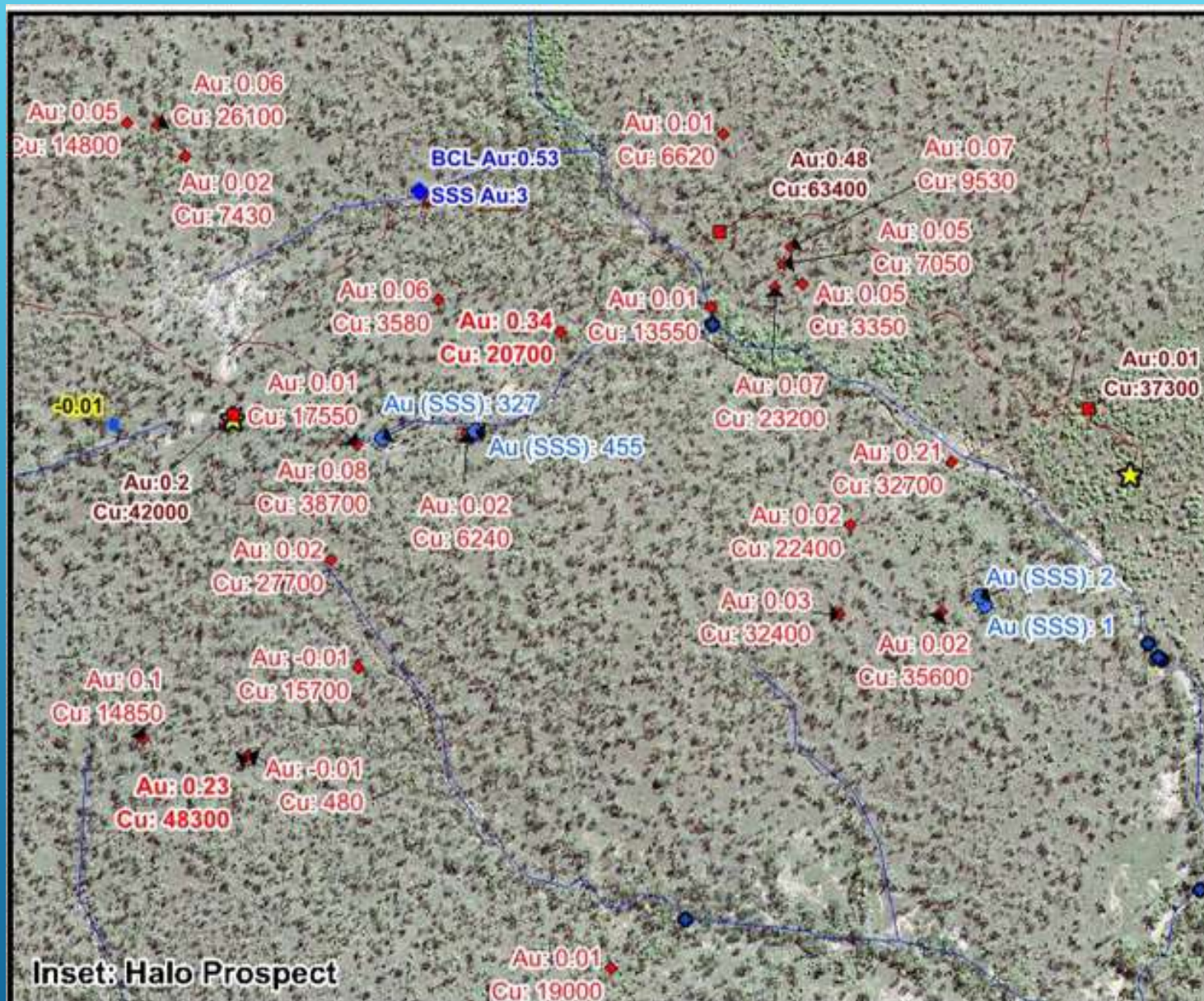


Gmag\_TMI

**Oakly Mill**

Halo

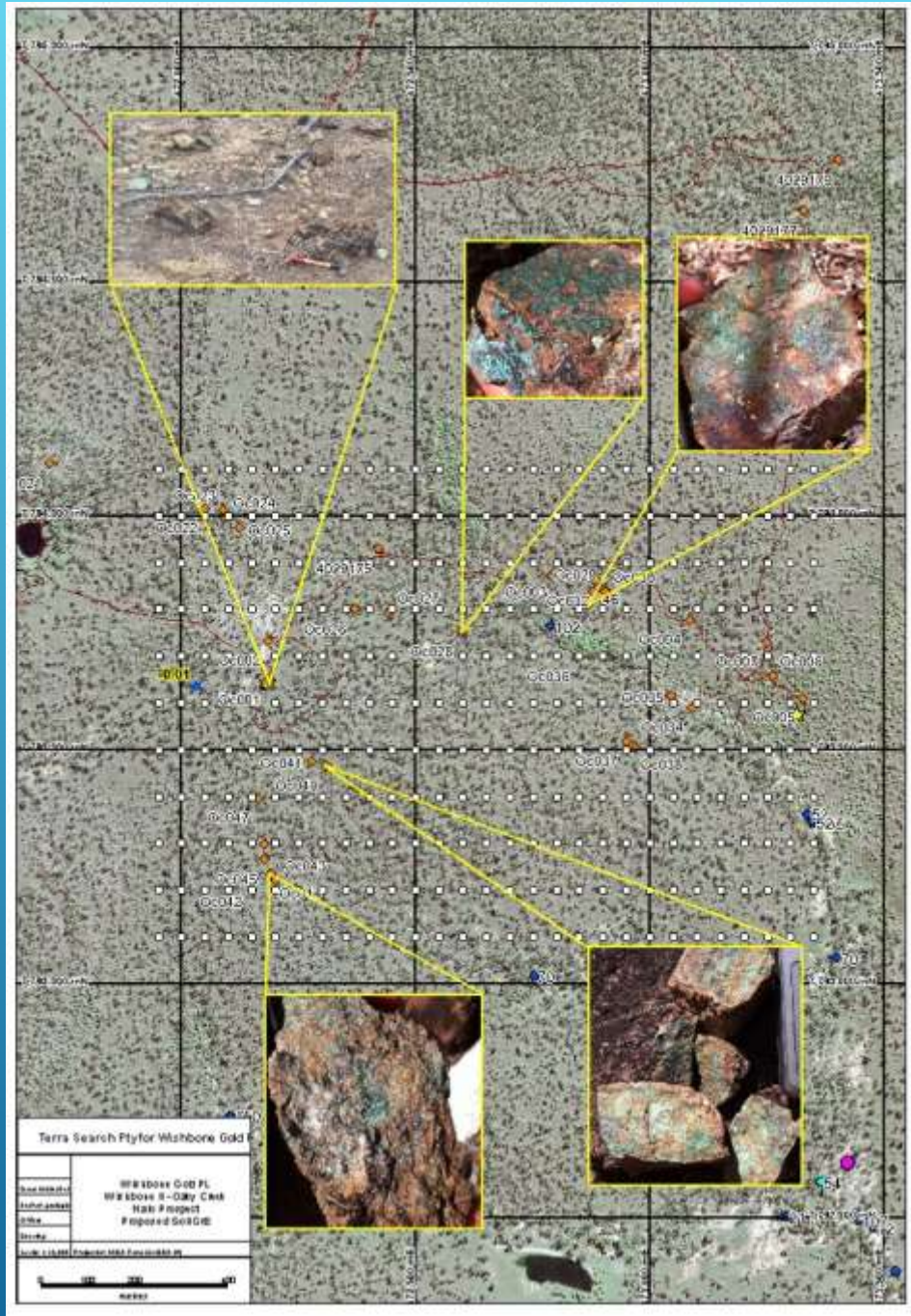




Halo Cu in Rock Chips – numerous samples >1% Cu



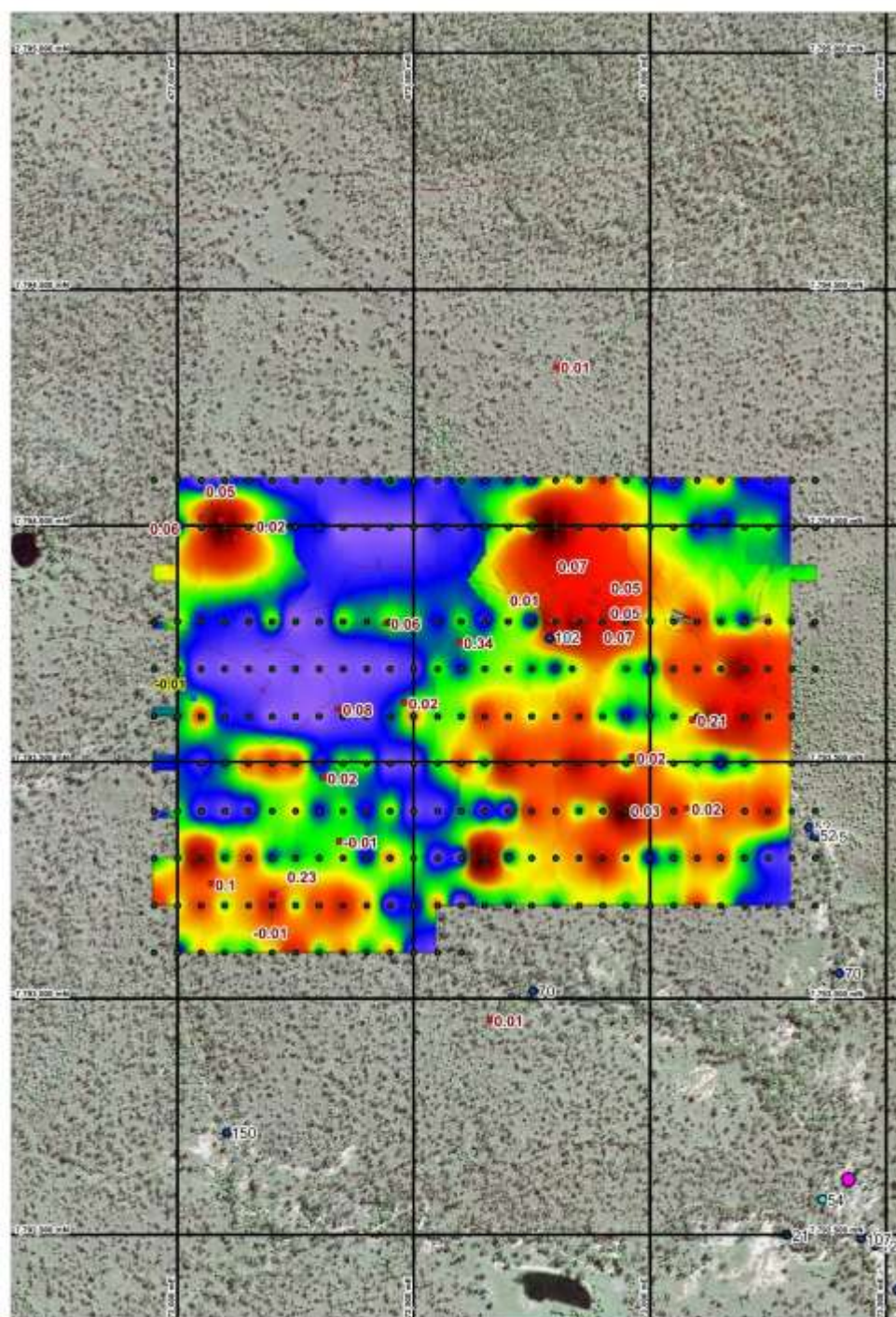
Halo Cu in Rock Chips – numerous samples >1% Cu









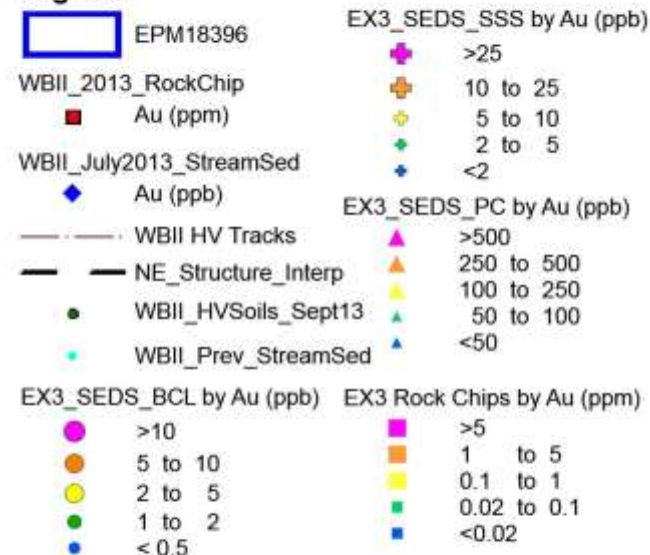


# Wishbone Gold Pty Ltd Wishbone II EPM19396

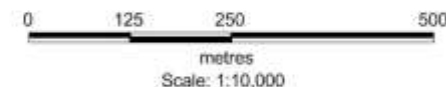
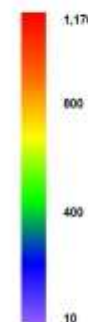
Oaky Creek Field Recon  
September 2013 Soil Grid

Background: Geoimage Satellite Imagery

## Legend



WBII\_OC\_PXRF\_Soils\_Sept13  
IDW Grid Cu (ppb)



Projection: MGA Zone 55 (GDA94)

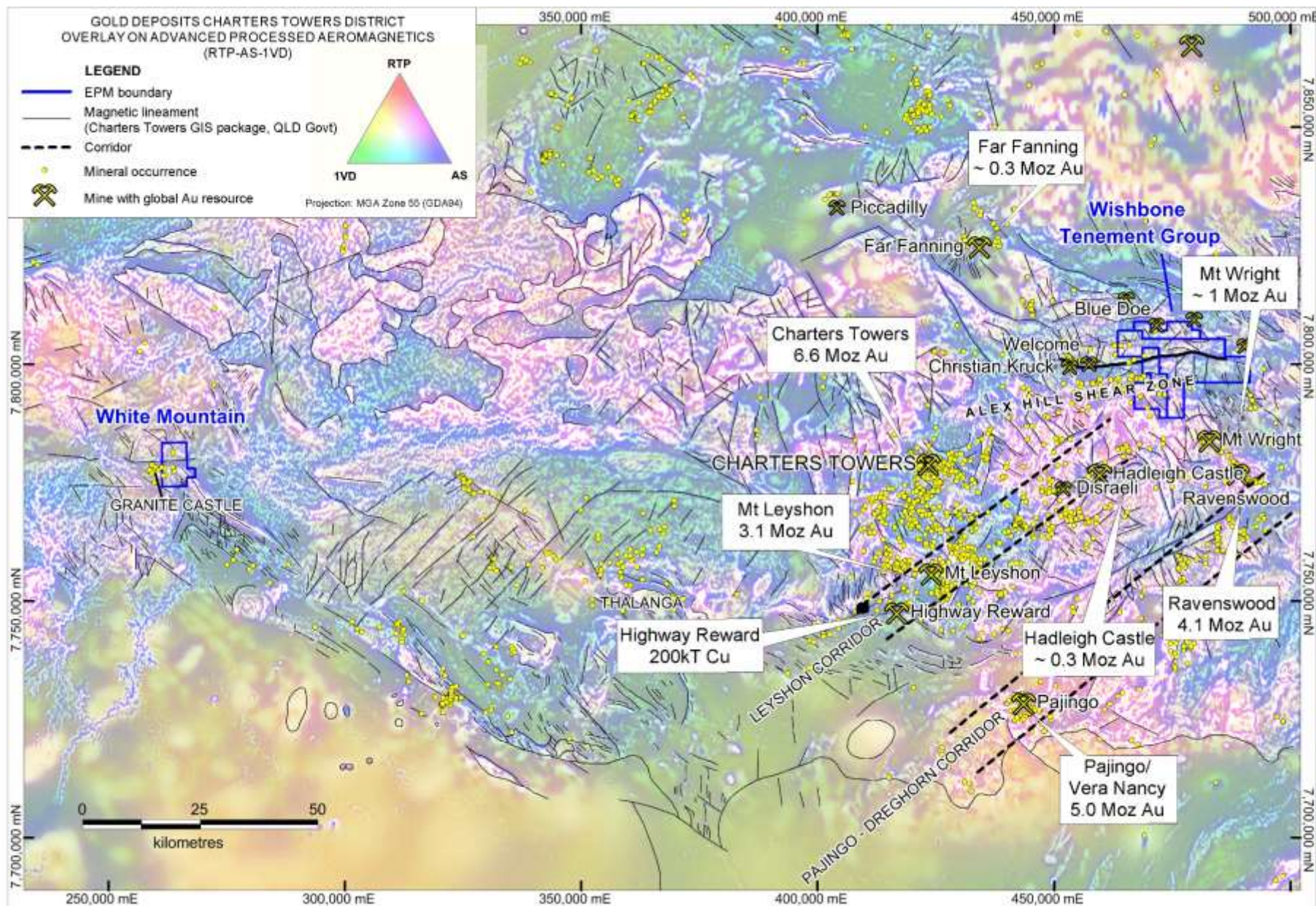
Terra Search  
Pty Ltd



# GOLD DEPOSITS CHARTERS TOWERS DISTRICT OVERLAY ON ADVANCED PROCESSED AEROMAGNETICS (RTP-AS-1VD)

## LEGEND

- EPM boundary
- Magnetic lineament  
(Charters Towers GIS package, QLD Govt)
- Corridor
- Mineral occurrence
- Mine with global Au resource







 Terra Search Pty Ltd  
18/03/2012  
WBG\_VW0004\_Location\_300dpi.dwg

**WISHBONE GOLD PTY LTD**  
**EPM18393 White Mountains**  
**Location**  
March 2012

**Wishbone Gold's exploration at White Mountains has highlighted the underexplored nature of this region on the western margin of the well mineralized North Queensland Charters Towers Gold Province. Significantly, there is very little previous drilling in the whole of the White Mountains tenement.**

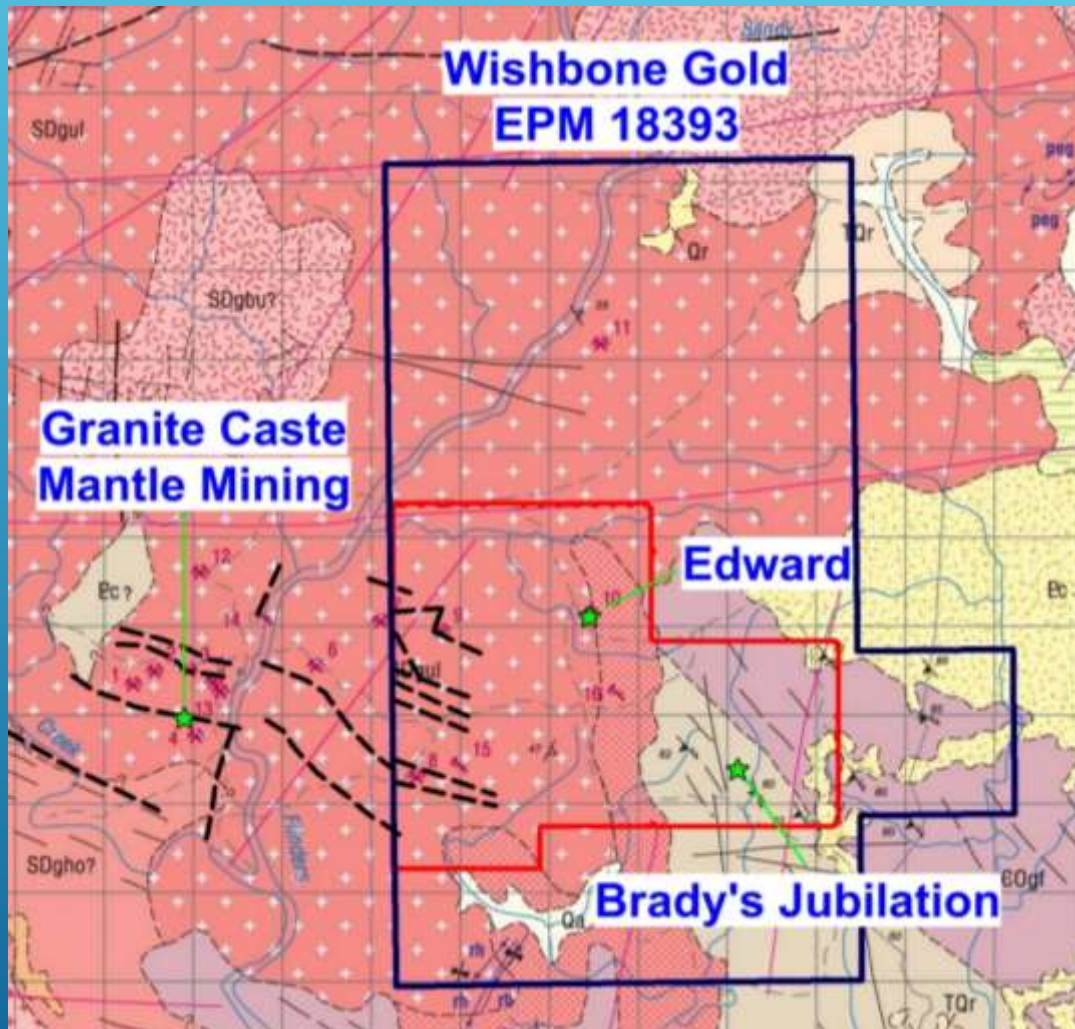
**An unusual zoned polymetallic hydrothermal system is present with an elemental association Ni, Co, Cr, As, Sb, indicating possible heterogeneous fluids : (1) possibly Permo-Carboniferous associated with dykes and (2) fluid that has interacted with mafic/ultramafic rocks. Similar patterns which trend into precious metal zones, have been noted elsewhere in the district eg Antler, near Homestead**





White  
Mountains  
EPM 18296  
is adjacent to  
Historic Gold  
Mining Area  
of  
Granite  
Castle held  
by Mantle  
Mining





Several small gold and polymetallic historical workings occur in Wishbone Gold's White Mountains tenement. Just to the west, there are several drilled gold prospects, the notable one being Granite Castle which is an advanced exploration play with a JORC gold resource currently being assessed by Mantle Mining Limited. Some of these trends extend along strike into the Wishbone Gold tenements



## **Mineralization :**

Granite hosted quartz sulphide veins .  
Strong association of gold with antimony  
and arsenic.

Edwards Prospect : high  
grade sample of antimony  
rich material : steely  
stibnite oxidised to yellow  
cervantite.

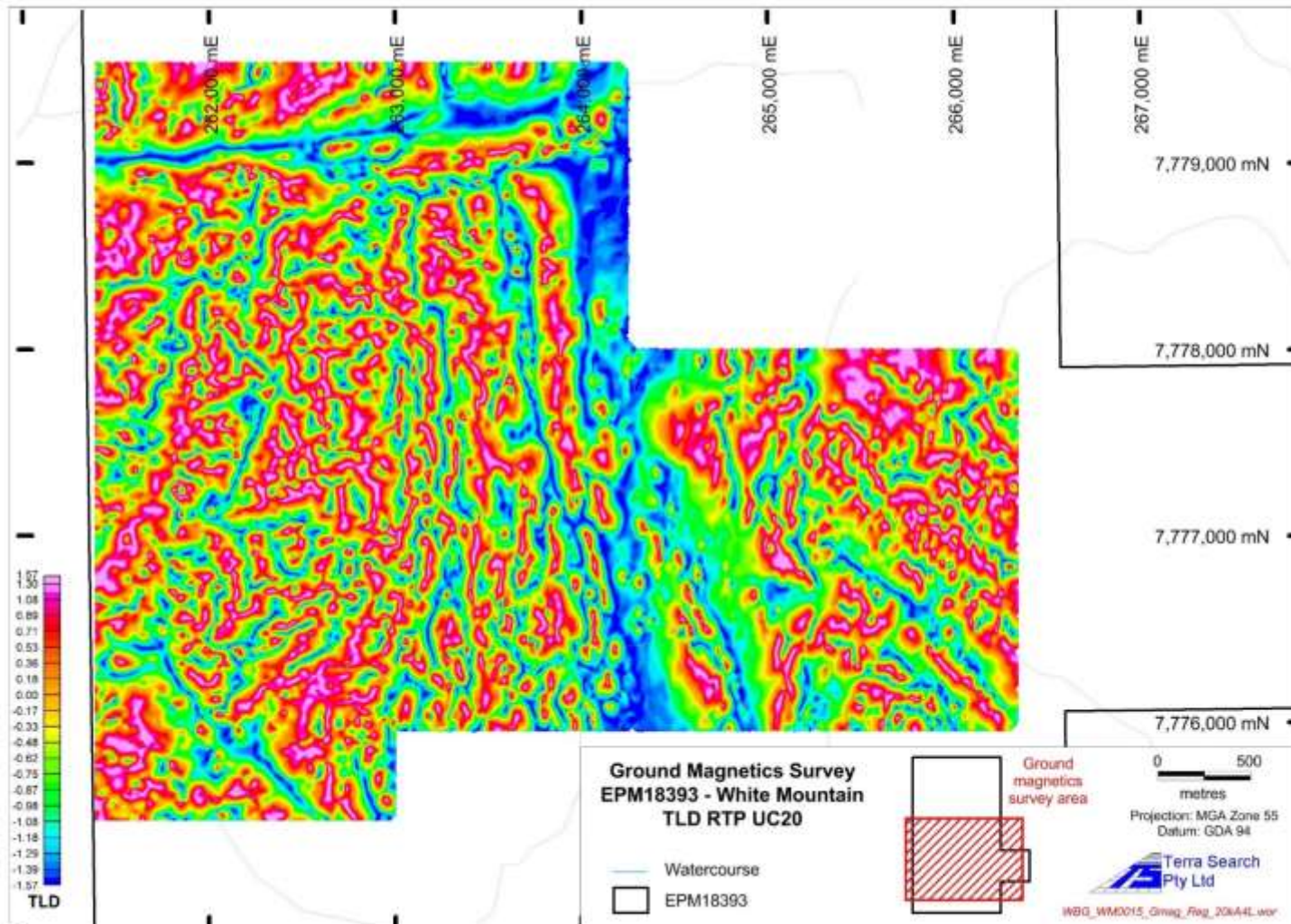




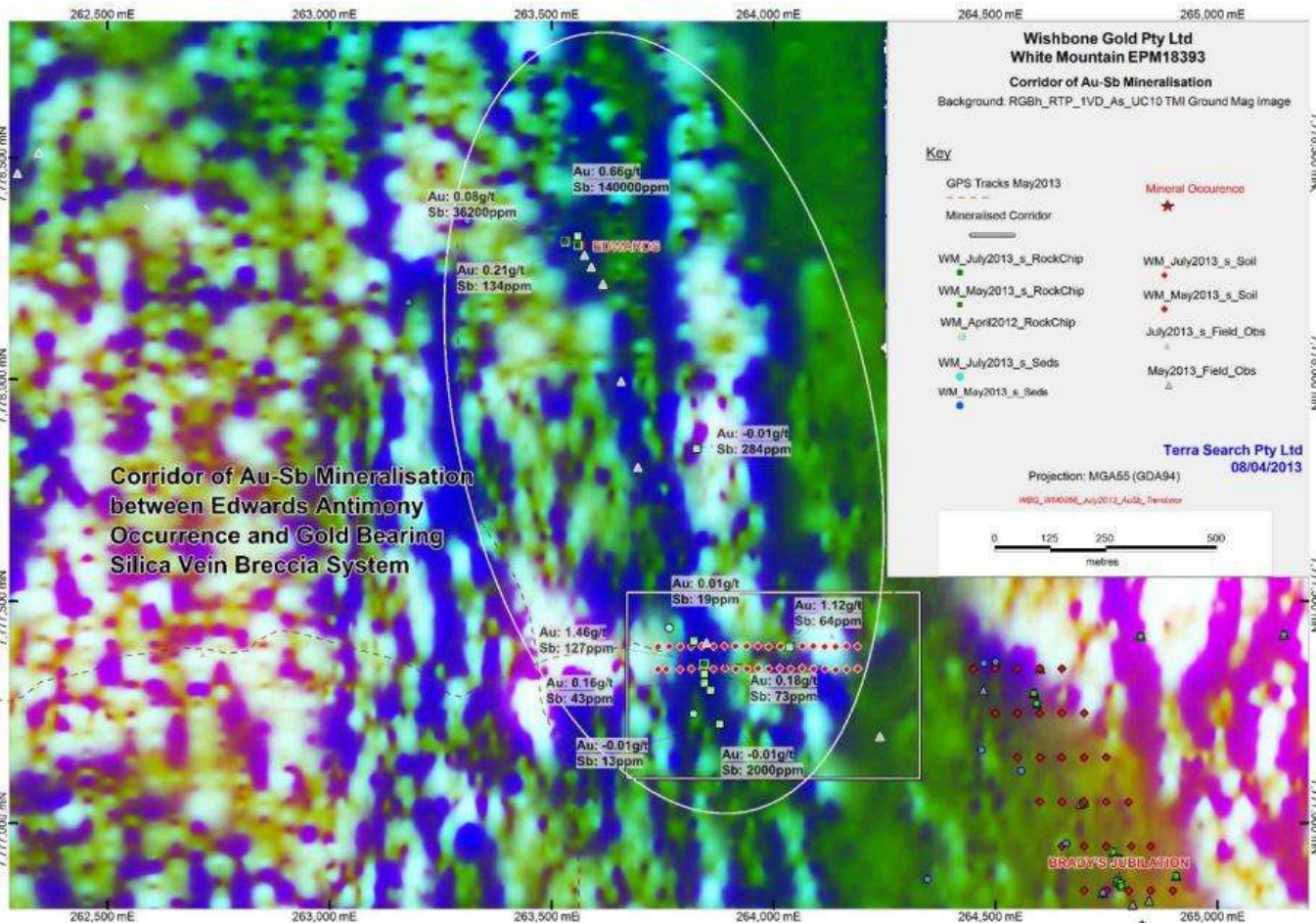
## Clements Copper : Granite hosted copper – gold shear











Edwards  
 antimony-gold-  
 arsenic structure  
 . Delineated by  
 ground  
 magnetics and  
 shown by rock  
 chip sampling to  
 be developed  
 over 2 km of  
 strike.





Also calc silicate  
associated with  
Ni,Cu, Cr,Sb,As &  
Hg