

This announcement contains inside information for the purposes of Article 7 of the Market Abuse Regulation (EU) 596/2014 as it forms part of UK domestic law by virtue of the European Union (Withdrawal) Act 2018 ("MAR"), and is disclosed in accordance with the Company's obligations under Article 17 of MAR



1 May 2025

Wishbone Gold Plc
("Wishbone" or the "Company")

Apex Geoscience appointed to undertake exploration at Red Setter

Wishbone Gold Plc (London AIM & Aquis: WSBN) advises that following on from its announcement of 25th April, it has now appointed Apex Geoscience Consultants to manage the day-to-day on the ground exploration and upcoming drilling program at the Red Setter Dome located 13 kilometres (**Figure 1**) to the southwest of the +15Moz Telfer Gold Mine, Western Australia.

Apex Geoscience Consultants, whose regional centre is in Perth, W.A., will start preparation and logistics for the planned extension of two drill holes into the main undrilled gold target at the Red Setter Dome that was identified by Expert Geophysics Limited in September 2024, and revalidated by Perth-based Southern Geoscience in April 2025.

Wishbone Gold's Chairman, Richard Poulden said: *"The drilling of the deeper holes into the main Red Setter Dome gold target is a priority for the Company and to make this happen as quickly as possible we have appointed Apex Geoscience to drive forward the planning, logistics and drilling of these holes. Our new operational model of engaging highly experienced specialist geology contactors for turn-on-turn-off geology tasks will ultimately help us execute these types of programs in a far more cost-effective manner than if Wishbone ran them and it will get the job completed more expeditiously."*

For more information on Wishbone, please visit the Company's website.
www.wishbonegold.com.

For further information, please contact:
Wishbone Gold PLC

Richard Poulden, Chairman

Tel: +971 4 584 6284

Beaumont Cornish Limited
(Nominated Adviser and AQUIS Exchange
Corporate Adviser)

Roland Cornish/Rosalind Hill Abrahams

Tel: +44 20 7628 3396

Tavira Financial Limited
(Broker)

Chris Kipling

Tel: +44 20 3833 3742

Soho Communications Ltd
(Financial PR)

George Hudson

Tel: +44 78 0360 3130

Beaumont Cornish Limited ("Beaumont Cornish") is the Company's Nominated Adviser and is authorised and regulated by the FCA. Beaumont Cornish's responsibilities as the Company's Nominated Adviser, including a responsibility to advise and guide the Company on its responsibilities under the AIM Rules for Companies and AIM Rules for Nominated Advisers, are owed solely to the London Stock Exchange. Beaumont Cornish is not acting for and will not be responsible to any other persons for providing protections afforded to customers of Beaumont Cornish nor for advising them in relation to the proposed arrangements described in this announcement or any matter referred to in it.

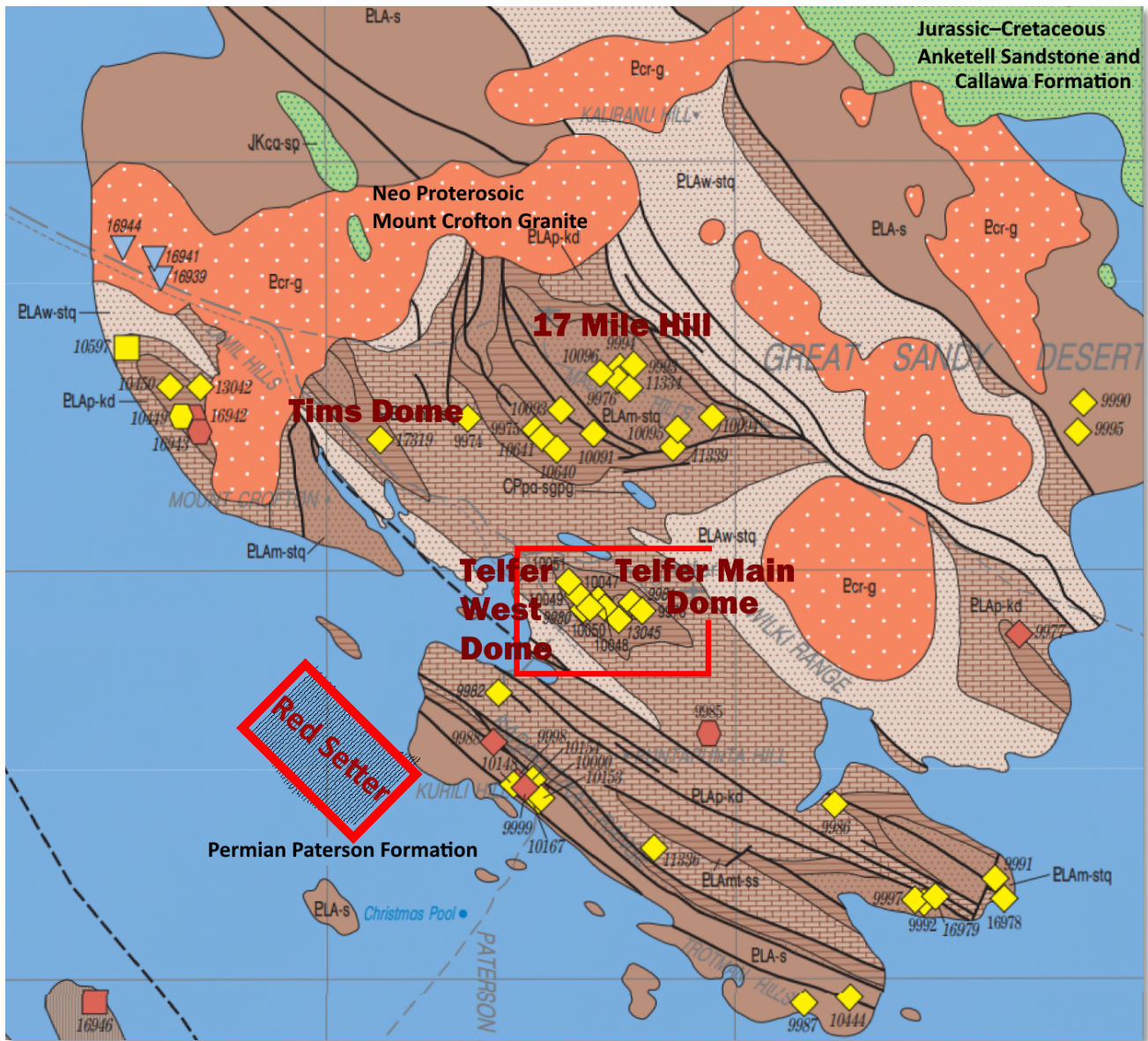


Figure 1: Red Setter Dome in relation to the Telfer Main Dome, Patersons Province, Western Australia